

FEATURES

- ▶ Industrial Standard DIP-24 Package
- ▶ Wide 2:1 Input Voltage Range
- ▶ Fully Regulated Output Voltage
- ▶ I/O Isolation 1500 VDC (opt. 3000VDC)
- ▶ Operating Ambient Temp. Range -40°C to +85°C
- ▶ No Min. Load Requirement
- ▶ Overload and Short Circuit Protection
- ▶ Designed-in Conducted EMI meets EN55022 Class A & FCC Level A
- ▶ UL/cUL/IEC/EN 60950-1 Safety Approval



PRODUCT OVERVIEW

The MINMAX MIW06 series is a new range of high performance dc-dc converter modules with 6W output power, featuring wide 2:1 input voltage ranges and tight output voltage regulation. The product comes in a DIP-24 package with industry standard footprint.

Excellent efficiency allows an operation temperature range of -40°C to +85°C (with derating). Standard features include overload protection.

Typical applications for these cost optimized converters are battery powered equipment, instrumentation, datacom and industrial electronics.

Model Selection Guide

Model Number	Input Voltage (Range) VDC	Output Voltage VDC	Output Current Max. mA	Input Current		Reflected Ripple Current mA(typ.)	Max. capacitive Load μF	Efficiency (typ.) @Max. Load %
				@Max. Load mA(typ.)	@No Load mA(typ.)			
MIW06-12S033	12 (9 ~ 18)	3.3	1200	440	40	30	470	75
MIW06-12S05		5	1200	641			470	78
MIW06-12S12		12	500	609			100	82
MIW06-12S15		15	400	609			100	82
MIW06-12S24		24	250	595			47	84
MIW06-12D05		±5	±500	534			100#	78
MIW06-12D12		±12	±250	609			100#	82
MIW06-12D15		±15	±200	609			100#	82
MIW06-24S033		24 (18 ~ 36)	3.3	1200			214	20
MIW06-24S05	5		1200	313	470	80		
MIW06-24S12	12		500	298	100	84		
MIW06-24S15	15		400	298	100	84		
MIW06-24S24	24		250	298	47	84		
MIW06-24D05	±5		±500	260	100#	80		
MIW06-24D12	±12		±250	298	100#	84		
MIW06-24D15	±15		±200	298	100#	84		
MIW06-48S033	48 (36 ~ 75)		3.3	1200	107	10	15	
MIW06-48S05		5	1200	156	470			80
MIW06-48S12		12	500	149	100			84
MIW06-48S15		15	400	149	100			84
MIW06-48S24		24	250	149	47			84
MIW06-48D05		±5	±500	130	100#			80
MIW06-48D12		±12	±250	149	100#			84
MIW06-48D15		±15	±200	149	100#			84

For each output

Input Specifications

Parameter	Model	Min.	Typ.	Max.	Unit
Input Surge Voltage (1 sec. max.)	12V Input Models	-0.7	---	25	VDC
	24V Input Models	-0.7	---	50	
	48V Input Models	-0.7	---	100	
Start-Up Threshold Voltage	12V Input Models	7	8	9	
	24V Input Models	14	16	18	
	48V Input Models	32	34	36	
Under Voltage Shutdown	12V Input Models	---	---	8.5	
	24V Input Models	---	---	16	
	48V Input Models	---	---	35	
Short Circuit Input Power		---	---	3000	mW
Input Filter	All Models	Internal Pi Type			
Conducted EMI		Compliance to EN 55022,class A and FCC part 15,class A			

Output Specifications

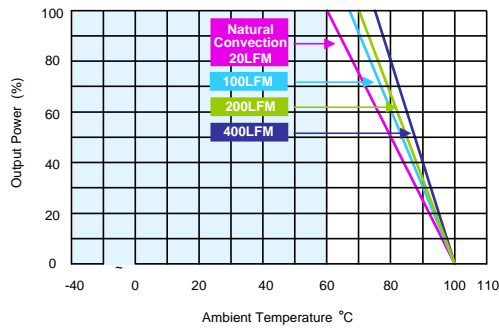
Parameter	Conditions	Min.	Typ.	Max.	Unit
Output Voltage Setting Accuracy		---	---	±2.0	%Vnom.
Output Voltage Balance	Dual Output, Balanced Loads	---	±1.0	±2.0	%
Line Regulation	Vin=Min. to Max. @Full Load	---	±0.1	±0.5	%
Load Regulation	Io=0% to 100%	---	±0.6	±1.2	%
Minimum Load	No minimum Load Requirement				
Ripple & Noise	0-20 MHz Bandwidth	---	---	80	mV _{P-P}
Transient Recovery Time	25% Load Step Change	---	300	600	μsec
Transient Response Deviation		---	±3	±5	%
Temperature Coefficient		---	±0.01	±0.02	%/°C
Over Load Protection	Foldback	110	145	---	%
Short Circuit Protection	Continuous, Automatic Recovery				

General Specifications

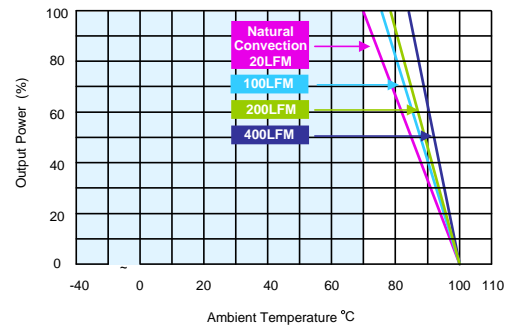
Parameter	Conditions	Min.	Typ.	Max.	Unit	
I/O Isolation Voltage	60 Seconds	Standard	1500	---	---	VDC
		Suffix H	3000	---	---	VDC
	1 Second	Standard	1800	---	---	VDC
I/O Isolation Resistance	500 VDC	1000	---	---	MΩ	
I/O Isolation Capacitance	100KHz, 1V	---	1000	---	pF	
Switching Frequency		---	330	---	KHz	
MTBF (calculated)	MIL-HDBK-217F@25°C, Ground Benign	1,000,000			Hours	
Safety Approvals	UL/cUL 60950-1 recognition (CSA certificate), IEC/EN 60950-1(CB-report)					

Environmental Specifications

Parameter	Conditions	Min.	Max.	Unit
Operating Ambient Temperature Range (See Power Derating Curve)	Natural Convection	-40	+85	°C
Case Temperature		---	+100	°C
Storage Temperature Range		-50	+125	°C
Humidity (non condensing)		---	95	% rel. H
Cooling	Natural Convection			
Lead Temperature (1.5mm from case for 10Sec.)		---	260	°C

Power Derating Curve


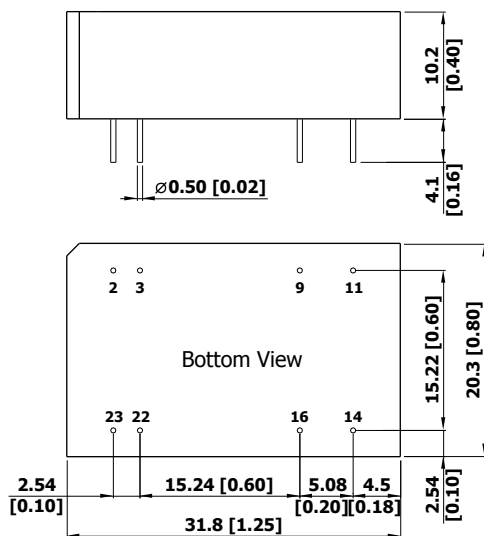
(3.3 & 5V Output Models)



(Other Output Models)

Notes

- 1 Specifications typical at $T_a = +25^\circ\text{C}$, resistive load, nominal input voltage and rated output current unless otherwise noted.
- 2 Transient recovery time is measured to within 1% error band for a step change in output load of 75% to 100%
- 3 We recommend to protect the converter by a slow blow fuse in the input supply line.
- 4 Other input and output voltage may be available, please contact factory.
- 5 That "natural convection" is about 20LFM but is not equal to still air (0 LFM).
- 6 Specifications are subject to change without notice.

Package Specifications
Mechanical Dimensions

Pin Connections

Pin	Single Output	Dual Output
2	-Vin	-Vin
3	-Vin	-Vin
9	No Pin	Common
11	NC	-Vout
14	+Vout	+Vout
16	-Vout	Common
22	+Vin	+Vin
23	+Vin	+Vin

NC: No Connection

- ▶ All dimensions in mm (inches)
- ▶ Tolerance: $X.X \pm 0.25$ ($X.XX \pm 0.01$)
 $X.XX \pm 0.13$ ($X.XXX \pm 0.005$)
- ▶ Pin diameter $\varnothing 0.5 \pm 0.05$ (0.02 ± 0.002)

Physical Characteristics

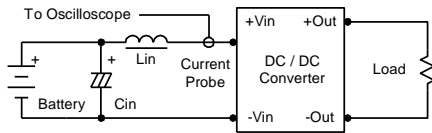
Case Size	: 31.8x20.3x10.2mm (1.25x0.80x0.40 inches)
Case Material	: Non-Conductive Black Plastic (flammability to UL 94V-0 rated)
Pin Material	: Copper Alloy with Gold Plate Over Nickel Subplate
Weight	: 12.7g

Order Code Table	
Standard	3KVDC isolation
MIW06-12S033	MIW06-12S033H
MIW06-12S05	MIW06-12S05H
MIW06-12S12	MIW06-12S12H
MIW06-12S15	MIW06-12S15H
MIW06-12S24	MIW06-12S24H
MIW06-12D05	MIW06-12D05H
MIW06-12D12	MIW06-12D12HH
MIW06-12D15	MIW06-12D15H
MIW06-24S033	MIW06-24S033H
MIW06-24S05	MIW06-24S05H
MIW06-24S12	MIW06-24S12H
MIW06-24S15	MIW06-24S15H
MIW06-24S24	MIW06-24S24H
MIW06-24D05	MIW06-24D05H
MIW06-24D12	MIW06-24D12H
MIW06-24D15	MIW06-24D15H
MIW06-48S033	MIW06-48S033H
MIW06-48S05	MIW06-48S05H
MIW06-48S12	MIW06-48S12H
MIW06-48S15	MIW06-48S15H
MIW06-48S24	MIW06-48S24H
MIW06-48D05	MIW06-48D05H
MIW06-48D12	MIW06-48D12H
MIW06-48D15	MIW06-48D15H

Test Setup

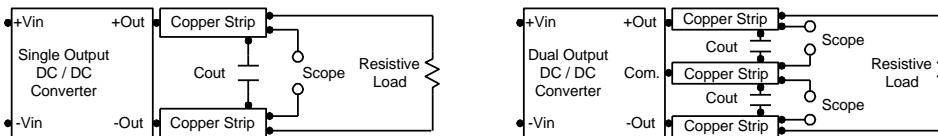
Input Reflected-Ripple Current Test Setup

Input reflected-ripple current is measured with an inductor L_{in} (4.7 μ H) and C_{in} (220 μ F, ESR < 1.0 Ω at 100 KHz) to simulate source impedance. Capacitor C_{in} , offsets possible battery impedance. Current ripple is measured at the input terminals of the module, measurement bandwidth is 0-500 KHz.



Peak-to-Peak Output Noise Measurement Test

Use a C_{out} 0.47 μ F ceramic capacitor. Scope measurement should be made by using a BNC socket, measurement bandwidth is 0-20 MHz. Position the load between 50 mm and 75 mm from the DC/DC Converter.



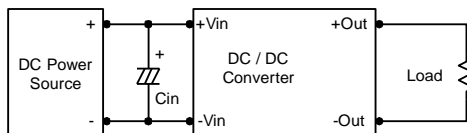
Technical Notes

Overcurrent Protection

To provide protection in a fault (output overload) condition, the unit is equipped with internal current limiting circuitry and can endure current limiting for an unlimited duration. At the point of current-limit inception, the unit shifts from voltage control to current control. The unit operates normally once the output current is brought back into its specified range.

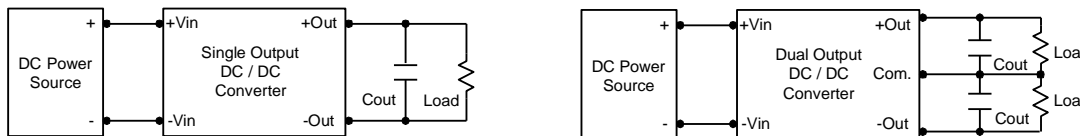
Input Source Impedance

The power module should be connected to a low ac-impedance input source. Highly inductive source impedances can affect the stability of the power module. In applications where power is supplied over long lines and output loading is high, it may be necessary to use a capacitor at the input to ensure startup. Capacitor mounted close to the power module helps ensure stability of the unit, it is recommended to use a good quality low Equivalent Series Resistance (ESR < 1.0 Ω at 100 KHz) capacitor of a 3.3 μ F for the 12V input devices and a 2.2 μ F for the 24V and 48V devices.



Output Ripple Reduction

A good quality low ESR capacitor placed as close as practicable across the load will give the best ripple and noise performance. To reduce output ripple, it is recommended to use 3.3 μ F capacitors at the output.



Maximum Capacitive Load

The MIW06 series has limitation of maximum connected capacitance at the output. The power module may be operated in current limiting mode during start-up, affecting the ramp-up and the startup time. The maximum capacitance can be found in the data sheet.

Thermal Considerations

Many conditions affect the thermal performance of the power module, such as orientation, airflow over the module and board spacing. To avoid exceeding the maximum temperature rating of the components inside the power module, the case temperature must be kept below 100°C.

The derating curves are determined from measurements obtained in a test setup.

